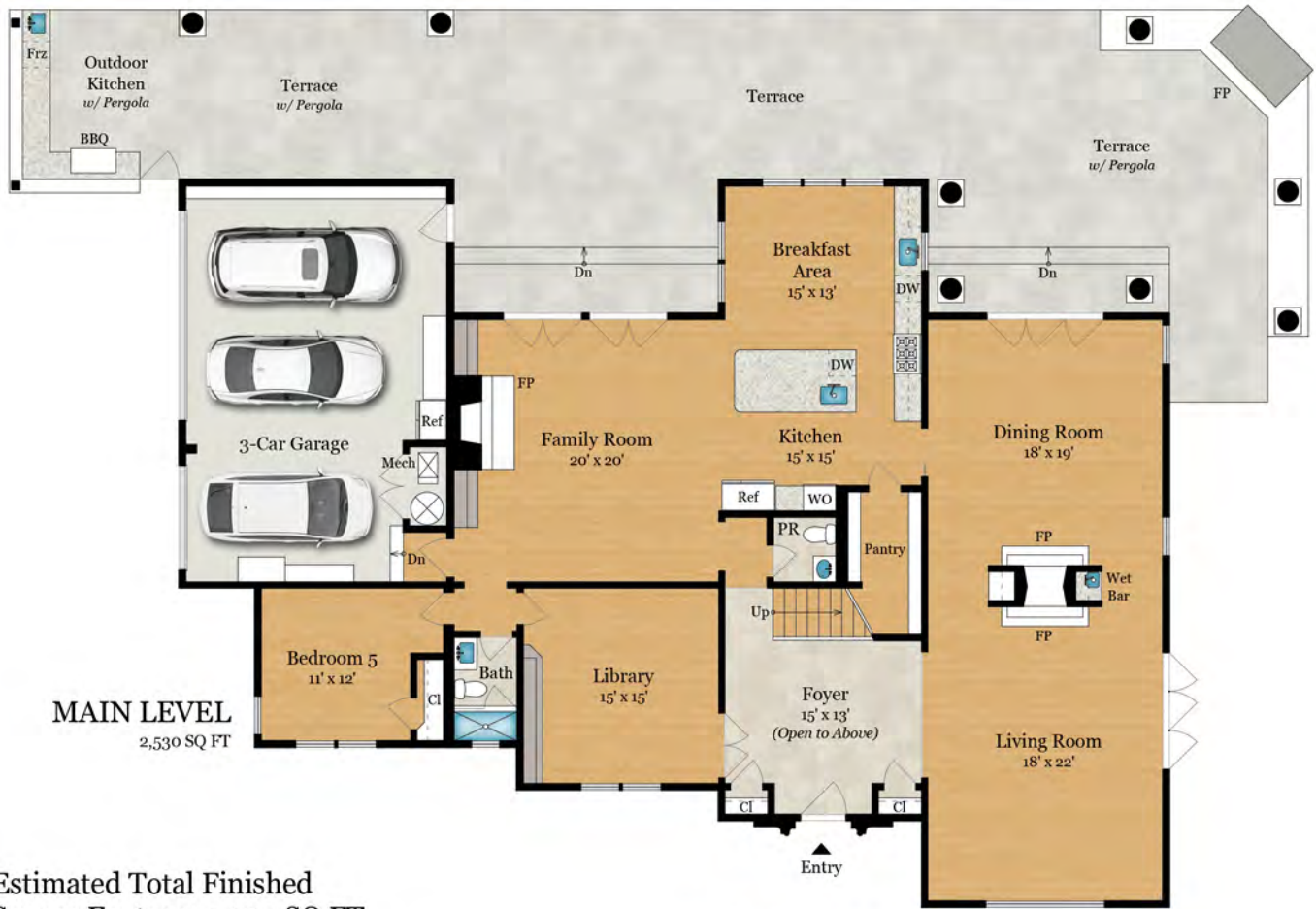




125 STONEPINE ROAD | HILLSBOROUGH, CA 94010



Estimated Total Finished Square Footage: 5,095 SQ FT

Above-Grade: 5,095 SQ FT Below-Grade: N/A
Plus 615 SQ FT 3-Car Garage on Main Level
Plus 85 SQ FT Shed
Calculated per ANSI Standard Z765-2003.

* Estimated Total Finished & Unfinished Square Footage: 5,795 SQ FT



Rendering by Floor Plan Visuals.
All measurements are approximate. While deemed reliable, no information on these floor plans should be relied upon without independent verification.

Presented by Sandy Comaroto, Alain Pinel Realtors
Tel: 650.714.1359
Email: scomaroto@gmail.com



125 STONEPINE ROAD | HILLSBOROUGH, CA 94010



SITE PLAN



Rendering by Floor Plan Visuals.
All measurements are approximate. While deemed reliable, no information on these floor plans should be relied upon without independent verification.

Presented by Sandy Comaroto, Alain Pinel Realtors
Tel: 650.714.1359
Email: scomaroto@gmail.com



125 STONEPINE ROAD | HILLSBOROUGH, CA 94010



SITE PLAN



Rendering by Floor Plan Visuals.
All measurements are approximate. While deemed reliable, no information on these floor plans should be relied upon without independent verification.

Note: The pool design has not been approved by the city. Please see disclosure packet for more information.

Presented by Sandy Comaroto, Alain Pinel Realtors
Tel: 650.714.1359
Email: scomaroto@gmail.com